

*Trial Garden & Plant Health Field Day*

***Nursery and Landscape Diseases***

***Brian D. Hudelson***

***Department of Plant Pathology***

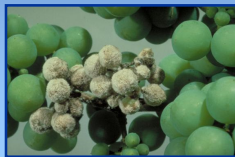
***University of Wisconsin-Madison/Extension***



***Nursery and Landscape Diseases***  
***Powdery Mildews***



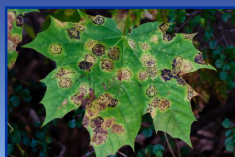
***Nursery and Landscape Diseases***  
***Downy Mildews***



***Nursery and Landscape Diseases***  
***Leaf Spots/Blights (Herbaceous)***



***Nursery and Landscape Diseases***  
***Leaf Spots/Blights (Woody)***



***Nursery and Landscape Diseases***  
***Rusts***



### Nursery and Landscape Diseases Gray Mold/Botrytis Blight



### Nursery and Landscape Diseases Foliar Nematode



### Nursery and Landscape Diseases Virus Diseases



### Nursery and Landscape Diseases Aster Yellows



### Nursery and Landscape Diseases White Mold



### Nursery and Landscape Diseases Southern Blight





### Nursery and Landscape Diseases Root/Crown/Stem Rots



### Nursery and Landscape Diseases Vascular Wilts



### Nursery and Landscape Diseases Herbicide Damage



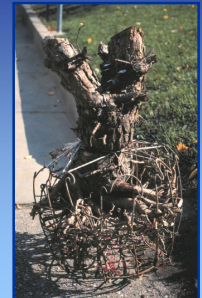
### Nursery and Landscape Diseases Other Abiotic Disorders



Cold Injury



Drought Stress



Improper Planting



Heat Injury



Winter Burn

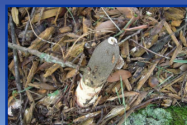
### Nursery and Landscape Diseases Non-Diseases: Fungi/Fungal Allies



Giant Puffballs



Lichens



Stink Horns



Bird's Nest Fungi



Slime Molds

### Nursery and Landscape Diseases Questions?

Plant Disease Diagnostics Clinic  
Department of Plant Pathology  
University of Wisconsin-Madison  
1630 Linden Drive  
Madison, WI 53706-1598  
(608) 262-2863  
[pddc@plantpath.wisc.edu](mailto:pddc@plantpath.wisc.edu)  
<http://pddc.wisc.edu>  
Follow on Twitter @UWPDDC