

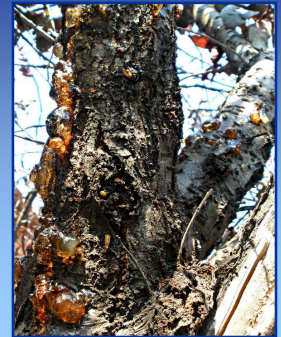
Let's Get Green and Growing 2018

**Dr. Death's
2018 Plant Disease Forecast**

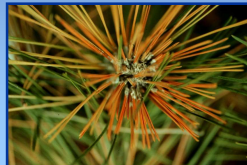
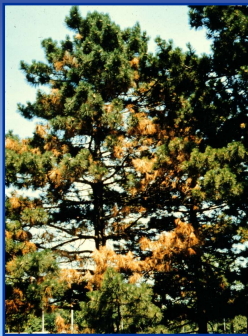
Brian D. Hudelson
Department of Plant Pathology
University of Wisconsin-Madison/Extension



**2018 Plant Disease Forecast
Bacterial Canker**



**2018 Plant Disease Forecast
Diplodia Shoot Blight and Canker**



**2018 Plant Disease Forecast
Other Fungal Canker Diseases**



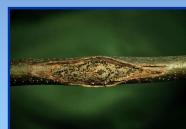
Nectria Canker



Golden Canker



Phomopsis Canker



Thyronectria Canker

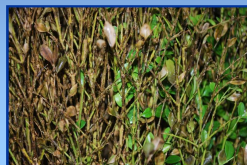


Coryneum Canker

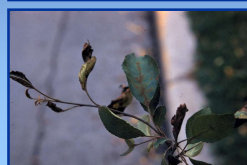


Cytospora Canker

**2018 Plant Disease Forecast
Boxwood Blight**



**2018 Plant Disease Forecast
Scab (Apple and Pear)**



2018 Plant Disease Forecast
Tar Spot



2018 Plant Disease Forecast
Rhizosphaera Needle Cast



2018 Plant Disease Forecast
Oak Wilt



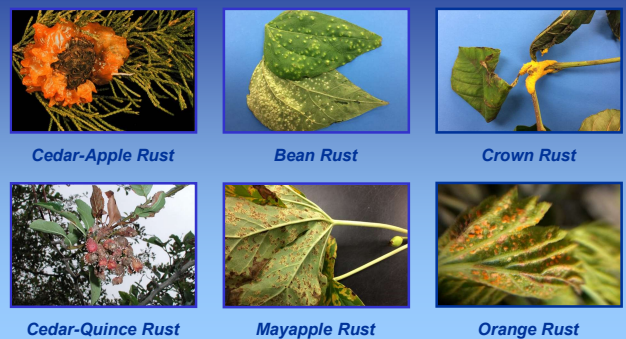
2018 Plant Disease Forecast
Verticillium Wilt



2018 Plant Disease Forecast
Crown Gall



2018 Plant Disease Forecast
Rusts



2018 Plant Disease Forecast Phytoplasma Diseases



Ash Yellows



Spirea Stunt



Unknown (Barberry)



Aster Yellows

2018 Plant Disease Forecast Powdery Mildews



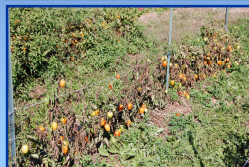
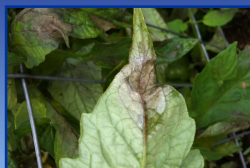
2018 Plant Disease Forecast Impatiens Downy Mildew



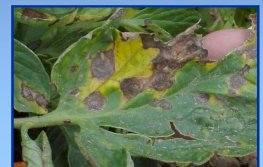
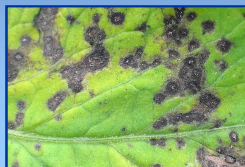
2018 Plant Disease Forecast Viral Diseases



2018 Plant Disease Forecast Late Blight



2018 Plant Disease Forecast Septoria Leaf Spot/Early Blight



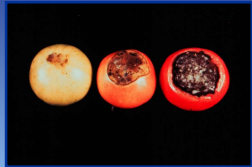
**2018 Plant Disease Forecast
Bacterial Tomato Diseases**



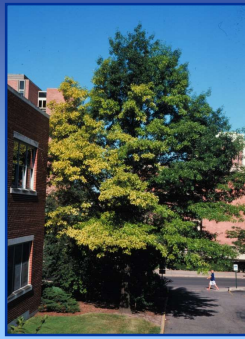
**2018 Plant Disease Forecast
Black Rot of Crucifers**



**2018 Plant Disease Forecast
Blossom End Rot**



**2018 Plant Disease Forecast
Chlorosis**



**2018 Plant Disease Forecast
Herbicide Injury**



**2018 Plant Disease Forecast
Questions?**

Plant Disease Diagnostics Clinic
Department of Plant Pathology
University of Wisconsin-Madison
 1630 Linden Drive
 Madison, WI 53706-1598
 (608) 262-2863
pddc@plantpath.wisc.edu
<http://pddc.wisc.edu>
 Follow on Twitter @UWPDDC