

**Commercial Flower Growers of Wisconsin**

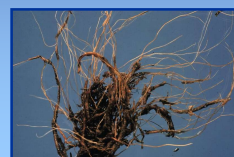
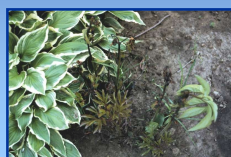
**Herbaceous Ornamental  
Plant Disease Update - 2018**

**Brian D. Hudelson**

**Department of Plant Pathology  
University of Wisconsin-Madison/Extension**



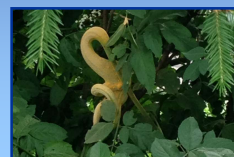
**Plant Disease Update - 2018  
Root/Crown Rots**



**Plant Disease Update - 2018  
Fungal Leaf Spots/Blights**



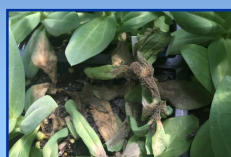
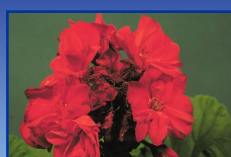
**Plant Disease Update - 2018  
Puccinia Rusts**



**Plant Disease Update - 2018  
Powdery Mildews**



**Plant Disease Update - 2018  
Gray Mold/Botrytis Blight**



*Plant Disease Update - 2018*  
**Xanthomonas Leaf Spots/Blights**



*Plant Disease Update - 2018*  
**Foliar Nematode**



*Plant Disease Update - 2018*  
**Virus Diseases**



*Plant Disease Update - 2018*  
**Myrothecium Spot/Blight**



*Plant Disease Update - 2018*  
**Verticillium Wilt**



*Plant Disease Update - 2018*  
**Questions**

*Plant Disease Diagnostics Clinic*  
*Department of Plant Pathology*  
*University of Wisconsin-Madison*  
*1630 Linden Drive*  
*Madison, WI 53706-1598*  
*(608) 262-2863*  
*pddc@wisc.edu*  
*<http://pddc.wisc.edu>*  
*Follow on Facebook and Twitter @UWPDDC*