



Plant Pathology Seminar



Tales from the PDDC: Trials and Tribulations from 2020 (and Beyond)

Brian D. Hudelson

Department of Plant Pathology
University of Wisconsin-Madison/Extension



Tales from the PDDC COVID-19 Crisis



• Timeline

- February 5: First WI COVID-19 case recorded
- February 7-9: Garden Expo occurred
- March 10: Last in-person program offered (MGV training, Monroe, WI)
- March 18: Russell Labs closed to the public
- March 28: PDDC in-lab activities ceased
- April 25: PDDC in-lab activities resumed



Tales from the PDDC COVID-19 Crisis



• Challenges

- Staffing was limited
 - Student help was not allowed
 - Staff overlap was not allowed
- Sample processing is time consuming
 - 2019 sample volume was not sustainable
 - Current reporting method was not viable
- Data entry became messy
- Maintaining services/visibility was critical



Tales from the PDDC COVID-19 Crisis



• Solutions

- Digital diagnostics became the norm
 - Endpoint diagnostic tool
 - Prescreen for physical samples
- Physical samples were prioritized
 - Commercial food/agriculture samples
 - Regulatory samples
 - Commercial non-food samples
 - Homeowner samples



Tales from the PDDC COVID-19 Crisis



• Solutions

- Scheduling/communication became critical
 - Mornings: Sue Lueloff
 - Afternoons: Brian Hudelson
- Reporting and billing went electronic
 - Sample arrival to reporting time shortened
 - Time savings became important
- Data entry responsibilities were shifted



Tales from the PDDC COVID-19 Crisis



	<u>2019</u>	<u>2020</u>
Sample numbers (physical)	1506 (1506)	2315 (699)
Total billable fees	\$58,664	\$59,312
Total credits	\$7,388	\$35,038
Ave. \$ per physical sample	\$34	\$35
Submission method (%)		
– Mail	54	96
– Walk-in	46	4
Submitter type (%)		
– Agent	11	17
– Consultant	38	23
– Grower	51	60



Tales from the PDDC COVID-19 Crisis



	2019	2020
Grower type (%)		
– Amateur	54	84
– Professional	46	16
Sample type (%)		
– Trees and shrubs	47	58
– Vegetables	22	15
– Field and forage crops	8	4
– Herbaceous ornamentals	7	8
– Fruits	7	11
– Soil	4	2
– Specialty crops	4	<1
– Miscellaneous	1	2



Tales from the PDDC COVID-19 Crisis



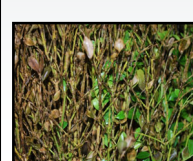
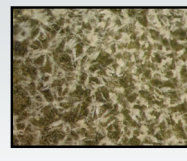
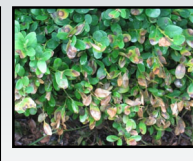
- **Lasting outcomes**
 - **Clinic diagnostic activities**
 - Digital diagnostics will continue (for a fee)
 - Electronic reporting and billing will continue
 - Remote work will continue (at some level)
 - **Clinic outreach activities**
 - Distance outreach (Zoom) is here to stay
 - Statewide programming will increase



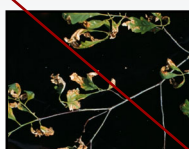
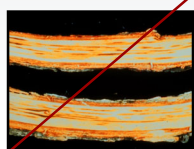
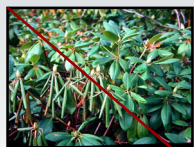
Tales from the PDDC Jilted Geraniums



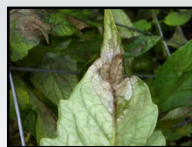
Tales from the PDDC Battered Boxwoods



Tales from the PDDC Aberrant Azaleas



Tales from the PDDC Problematic Potatoes: Part I



Tales from the PDDC
Inscutable Immunostrip

Tales from the PDDC
Problematic Potatoes: Part II

Tales from the PDDC
Problematic Potatoes: Part III

Tales from the PDDC
Hobbling Horses

Tales from the PDDC
Leafless Lilacs

Tales from the PDDC
Crummy Crabapples

