

Community Garden Summit

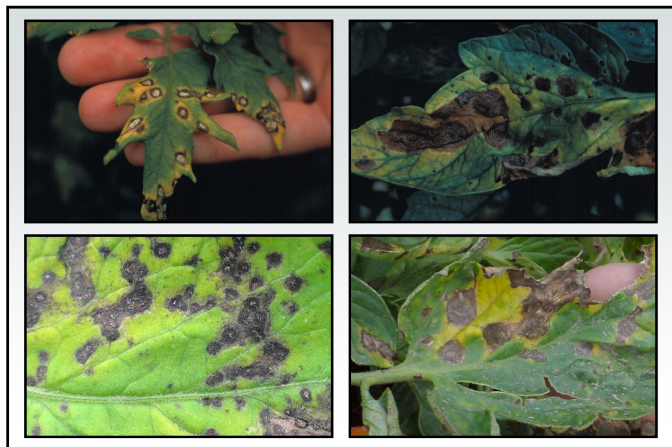
Vegetable Diseases

Brian D. Hudelson
Department of Plant Pathology
University of Wisconsin-Madison/Extension



Vegetable Diseases Fungal Leaf Blights

- **Causes**
 - *Septoria lycopersici* (Septoria leaf spot)
 - *Alternaria solani* (early blight)
 - *Phytophthora infestans* (late blight)
- **Hosts**
 - Tomato
 - Potato (early blight, late blight)
- **Favorable environment:** Cool, wet weather



Vegetable Diseases Fungal Leaf Blights

- **Control (early blight, Septoria leaf spot)**
 - Remove and destroy contaminated debris
 - Burn (where allowed)
 - Deep bury
 - Hot compost
 - Move tomatoes to new location

Vegetable Diseases Fungal Leaf Blights

- **Control (early blight, Septoria leaf spot)**
 - Plant resistant varieties
 - Space plants far apart
 - Mulch around the base of plants
 - DO NOT overmulch

Vegetable Diseases Fungal Leaf Blights

- **Control (early blight, Septoria leaf spot)**
 - DO NOT overhead water
 - Thin plants as they grow
 - Use fungicides to prevent infections
 - Chlorothalonil, mancozeb
 - Copper
 - Alternate active ingredients (FRAC codes)
 - Apply at 7-14 days intervals

Vegetable Diseases Fungal Leaf Blights

- **Control (late blight)**
 - Remove any infected plants and plant parts
 - Infected tomato/potato plants including fruits and tubers
 - Volunteer tomato and potato plants
 - Weed hosts
 - Destroy any infected plants and plant parts
 - Burn (where allowed)
 - Double bag and landfill

Vegetable Diseases Fungal Leaf Blights

- **Control (late blight)**
 - DO NOT use last year's potatoes as seed
 - DO use certified seed potatoes
 - Grow resistant tomato varieties
 - "Late Blight Management in Tomato with Resistant Varieties"
(<https://eorganic.org/node/10822>)

Vegetable Diseases Fungal Leaf Blights

- **Control (late blight)**
 - Use fungicides to prevent infections
 - Chlorothalonil, mancozeb
 - Copper
 - Alternate active ingredients (FRAC codes)
 - Start applications based on Blitecast
(<https://wisconsinpotatoes.com/blog-news/>)
 - Apply at 7-14 day intervals

Vegetable Diseases Blossom End Rot

- **Cause: Calcium deficiency**
- **Affected plants**
 - Tomato
 - Pepper
 - Eggplant
 - Cucurbits
(cucumber, squash, pumpkin, watermelon)
- **Favorable Environment: Drought**

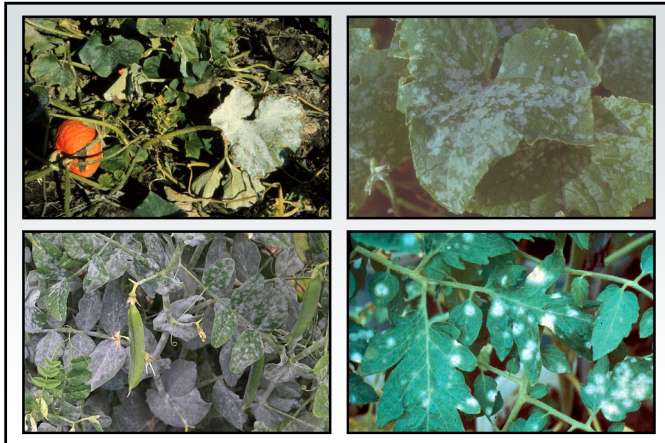


Vegetable Diseases Blossom End Rot

- **Management**
 - Test soil to determine calcium level
 - Add calcium as needed
 - Bone meal
 - Egg shells
 - NOT lime (usually)
 - Water plants adequately and uniformly

Vegetable Diseases Powdery Mildew

- **Causes**
 - Miscellaneous powdery mildew fungi
 - *Oidium* spp.
- **Hosts**
 - Cucurbits (cucumber, squash, pumpkin)
 - Other vegetables (pea, tomato)
- **Favorable environment: High humidity**



Vegetable Diseases Powdery Mildew

- **Control**
 - Remove and destroy plant debris
 - Burn (where allowed)
 - Deep bury
 - Hot compost
 - Reduce humidity
 - Plant less densely/thin existing stands
 - Grow vining plants on a trellis
 - Use resistant cultivars/varieties

Vegetable Diseases Powdery Mildew

- **Control**
 - Use fungicides to prevent infections
 - Dithiocarbamates, myclobutanil, propiconazole, tebuconazole, thiophanate-methyl
 - Sulfur, neem oil, other plant-based oils
 - 1.5 Tbsp baking soda + 3 Tbsp light-weight horticultural oil in 1 gal water
 - Alternate active ingredients (FRAC codes)
 - Apply when humidity is >60-70%
 - Apply every 7-14 days

Vegetable Diseases Walnut Toxicity

- **Cause: Juglones**
 - Black walnut
 - Butternut
 - Hickory
- **Affected plants**
 - Many vegetables
 - Tomato, potato, pepper, eggplant
 - Asparagus, cabbage



Vegetable Diseases Walnut Toxicity

- **Management**
 - DO NOT plant sensitive vegetables near walnut trees
 - Plant tolerant vegetables
 - Beans
 - Corn
 - Parsnip
 - Plant sensitive vegetables
 - Beet
 - Melon
 - Squash
 - Carrot
 - Onion
 - in raised beds
 - in pots

Vegetable Diseases Walnut Toxicity

- **Management**
 - Keep walnut leaves and fruits out of your garden
 - DO NOT compost walnut leaves and fruits
 - Remove volunteer walnut trees
 - Remove mature walnut trees (?)

Vegetable Diseases Herbicide Injury

- **Causes**
 - Growth regulator herbicides
 - 2,4-D
 - Dicamba
 - Other herbicides
- **Affected plants**
 - All vegetables
 - Tomatoes



Vegetable Diseases Herbicide Injury

- **Management**
 - DO NOT use herbicides
 - If you or your neighbors do use herbicides, make sure that you or they
 - Follow application directions exactly
 - Apply herbicides at low wind speeds (< 5 mph)
 - DO NOT apply herbicides too close to sensitive plants
 - Apply herbicides at low pressure
 - Use amine rather than ester forms of herbicides

Vegetable Diseases Common Smut

- Cause: *Ustilago maydis*
- Host: Sweet corn
- Favorable environment
 - None (ear infections)
 - Hail (leaf and stalk infections)



Vegetable Diseases Common Smut

- Control
 - Plant resistant varieties
 - Reduce physical damage to corn plants
 - DO NOT use chemical or biological controls
 - Give up on your corn and eat the smut (huitlacoche)

Vegetable Diseases Black Rot

- Cause: *Xanthomonas campestris* pv. *campestris*
- Hosts: Crucifers
 - Brussels sprouts, cabbage, collards
 - Broccoli, cauliflower, kale, kohlrabi, rutabaga, turnips
- Favorable environment: Wet weather



Vegetable Diseases Black Rot

- Control
 - Buy high quality (certified pathogen-free) seed or transplants
 - Heat treat seeds
 - 35 min, 122°F (Brussels sprouts, cabbage, collards)
 - 20 min, 122°F (broccoli, cauliflower, kale, kohlrabi, rutabaga, turnips)

Vegetable Diseases **Black Rot**

- **Control**
 - Routinely rotate crops
 - DO NOT grow host plants in an infested areas
 - Plant non-hosts in infested areas
 - Fertilize properly (particularly nitrogen)
 - DO NOT overhead water
 - DO NOT handle plants when wet

Vegetable Diseases **Black Rot**

- **Control**
 - Remove and dispose of contaminated plants
 - Burn (where allowed)
 - Deep bury
 - Hot compost
 - Decontaminate infested items
(70% alcohol, disinfectants, 10% bleach)

Vegetable Diseases **Black Rot**

- **Control**
 - Use bactericides to prevent infections
 - Copper
 - Apply at 7-14 days intervals
 - Tolerant bacterial strains are a problem

Vegetable Diseases **Where to Go for Help**

Plant Disease Diagnostics Clinic
Department of Plant Pathology
University of Wisconsin-Madison
1630 Linden Drive
Madison, WI 53706-1598
(608) 262-2863
pddc@wisc.edu
<https://pddc.wisc.edu>

Follow on Facebook and Twitter @UWPDDC
Subscribe to the PDDC Listserv: UWPDDCLearn