

Extension Sauk County Presents

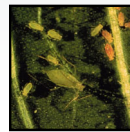
Growing Healthy Plants Basics in Plant Disease Management

Brian D. Hudelson
Department of Plant Pathology
University of Wisconsin-Madison/Extension



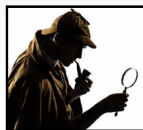
Plant Disease Management Definition

- Anything that you can do to reduce the impact of disease
- Integrated with other types of management



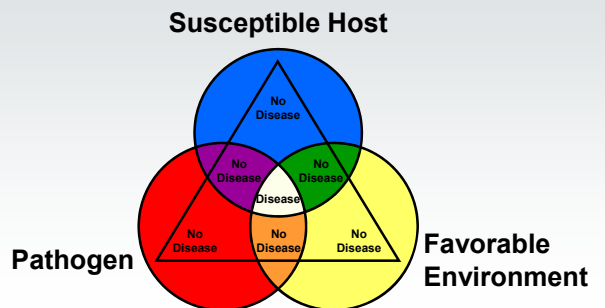
Plant Disease Management Diagnosis

- First step in successful management
- Recognition that something is wrong



- Detective work to figure out what happened and why something happened

Plant Disease Management The Disease Triangle

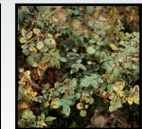


Plant Disease Management R-E-P-E-A-T

- Resistance
- Exclusion
- Protection
- Eradication
- Avoidance
- Therapy

Plant Disease Management Resistance

- Using a plant's natural ability to fend off disease



Plant Disease Management Resistance

- Resistance is NOT universal!



Plant Disease Management Resistance

- Resistance is NOT immunity!



Plant Disease Management Resistance

- Resistance can depend on plant “age” and plant part!



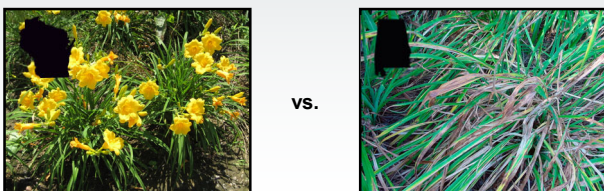
Plant Disease Management Resistance

- Resistance effectiveness can depend on the weather!



Plant Disease Management Resistance

- Resistance may not be equally effective in all locations!



vs.

Plant Disease Management Resistance

- Resistance is sometimes NOT forever!



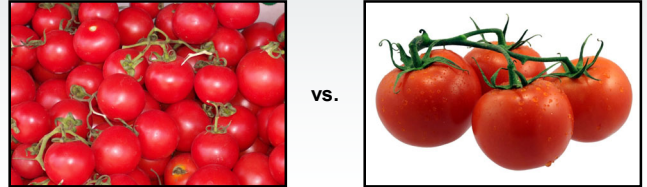
Plant Disease Management Resistance

- Resistance is not everything you may need in a plant!



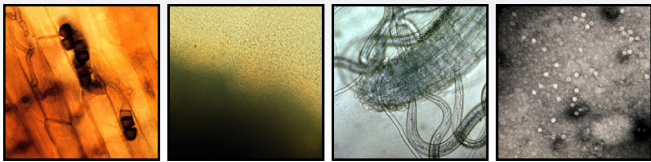
Plant Disease Management Resistance

- Resistance is not always good!



Plant Disease Management Exclusion

- Preventing introduction of pathogens into you garden



Plant Disease Management Exclusion

- Buy healthy plants!



Plant Disease Management Exclusion

- Buy healthy seeds!



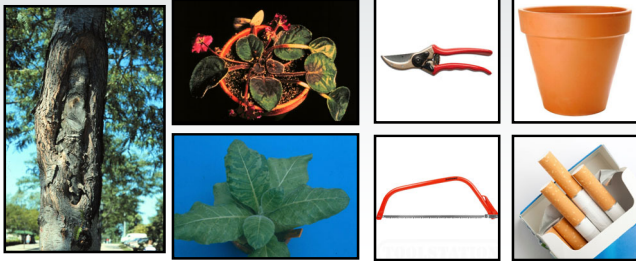
Plant Disease Management Exclusion

- Limit soil movement!



Plant Disease Management Exclusion

- Limit other pathogen introductions!



Plant Disease Management Exclusion

- Decontaminate, decontaminate, decontaminate!



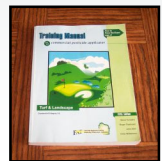
Plant Disease Management Protection

- Applying materials to prevent infections by pathogens from occurring



Plant Disease Management Protection

- Use as a last resort!
- Read pesticide labels!
- Use proper rates!
- Apply at the right times!
- Wear appropriate clothing!
- Alternate active ingredients!
- Get training!



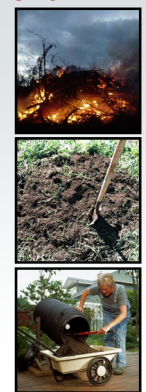
Plant Disease Management Eradication

- Getting rid of pathogens once they have arrived in your garden



Plant Disease Management Eradication

- Do good fall clean-up!



Plant Disease Management Eradication

- Prune diseased branches!



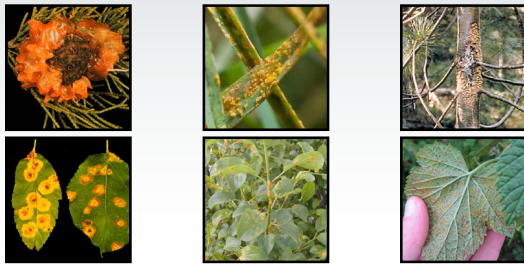
Plant Disease Management Eradication

- Remove entire plants!



Plant Disease Management Eradication

- Control alternate hosts!



Plant Disease Management Eradication

- Control weeds!



Plant Disease Management Eradication

- Rotate, rotate, rotate!



Plant Disease Management Eradication

- Decontaminate, decontaminate, decontaminate!



Plant Disease Management Avoidance

- Manipulating how you grow your plants to prevent conditions favorable for disease



Plant Disease Management Avoidance

- DO NOT plant susceptible plants where a known disease exists!



Plant Disease Management Avoidance

- DO NOT plant too early or too deeply!



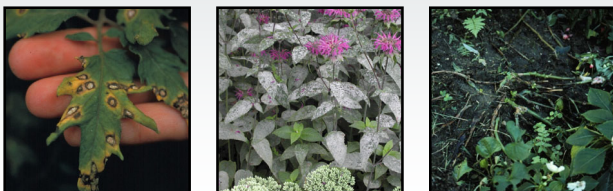
Plant Disease Management Avoidance

- DO NOT plant too densely!



Plant Disease Management Avoidance

- DO NOT water too much!



Plant Disease Management Avoidance

- DO NOT use sprinklers to water!



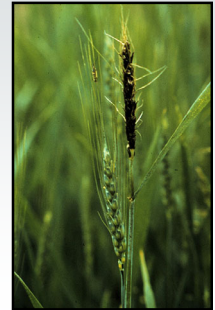
Plant Disease Management Avoidance

- **DO NOT** water, heat or nutrient stress plants!



Plant Disease Management Therapy

- **Eliminating pathogens from infected plants**



Plant Disease Management Putting It All Together

- **Figure out what diseases you have**
- **Figure out what management techniques work**
- **Integrate your disease management with other management needs**
- **DO NOT** expect perfection
- **Enjoy your garden**
(including the diseases)

Plant Disease Management Where to Go for Help

Plant Disease Diagnostics Clinic
Department of Plant Pathology
University of Wisconsin-Madison
1630 Linden Drive
Madison, WI 53706-1598
(608) 262-2863
pddc@wisc.edu
<https://pddc.wisc.edu>

Follow on Facebook and Twitter @UWPDDC
Subscribe to the PDDC Listserv: UWPDDCLearn