

## Commercial Growers of Wisconsin

UW-PDDC  
Plant Disease Update 2022

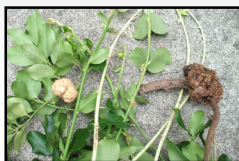
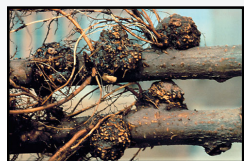
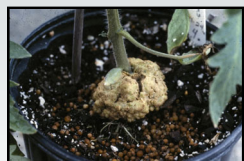
Brian D. Hudelson  
Department of Plant Pathology  
University of Wisconsin-Madison/Extension



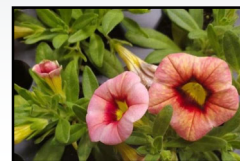
## Commercial Growers of Wisconsin Leafy Gall



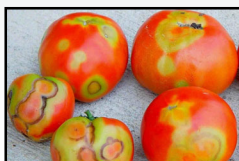
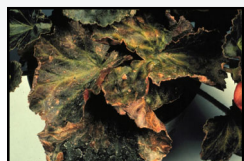
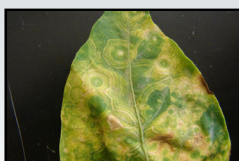
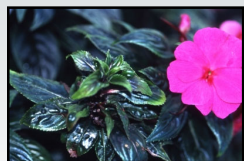
## Commercial Growers of Wisconsin Crown Gall



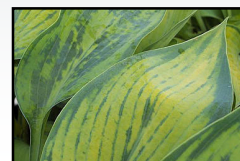
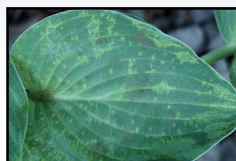
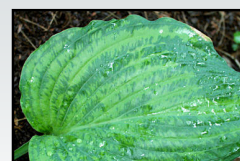
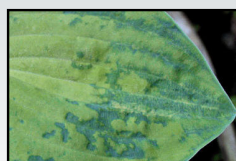
## Commercial Growers of Wisconsin Chili Pepper Mild Mottle



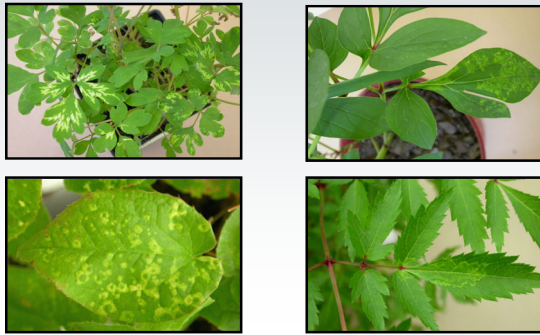
## Commercial Growers of Wisconsin Tospovirus Diseases



## Commercial Growers of Wisconsin Hosta Virus X



**Commercial Growers of Wisconsin**  
**Tobacco Rattle**



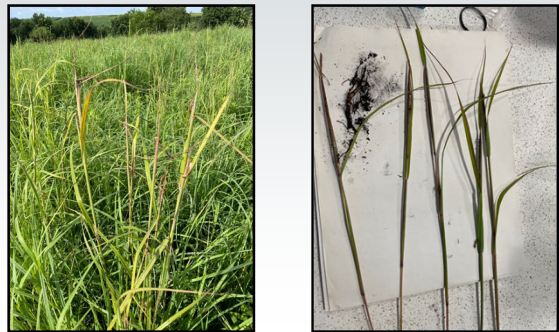
**Commercial Growers of Wisconsin**  
**Downy Mildew**



**Commercial Growers of Wisconsin**  
**Powdery Mildew**



**Commercial Growers of Wisconsin**  
**Culm Smut**



**Commercial Growers of Wisconsin**  
**Heat Stress/Sunburn**



**Commercial Growers of Wisconsin**  
**Questions?**

Plant Disease Diagnostics Clinic  
Department of Plant Pathology  
University of Wisconsin-Madison  
1630 Linden Drive  
Madison, WI 53706-1598  
(608) 262-2863  
pddc@wisc.edu  
<https://pddc.wisc.edu>  
Follow on Facebook/Twitter/YouTube @UWPDDC  
Subscribe to the PDDC Listserv: UWPDDCLearn